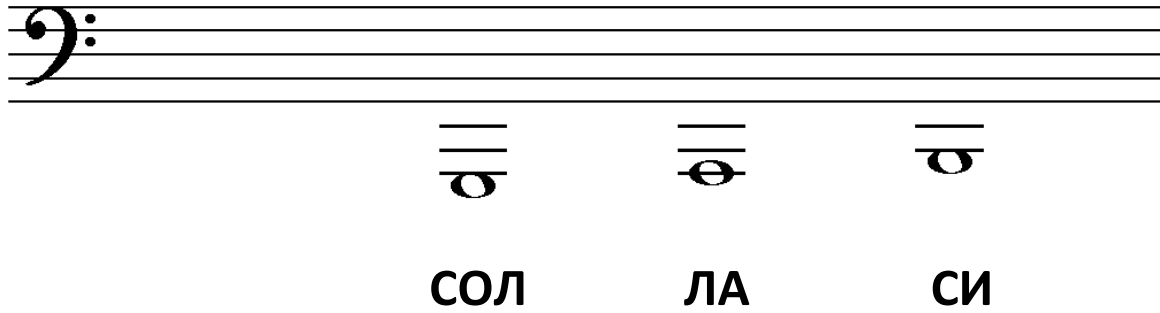
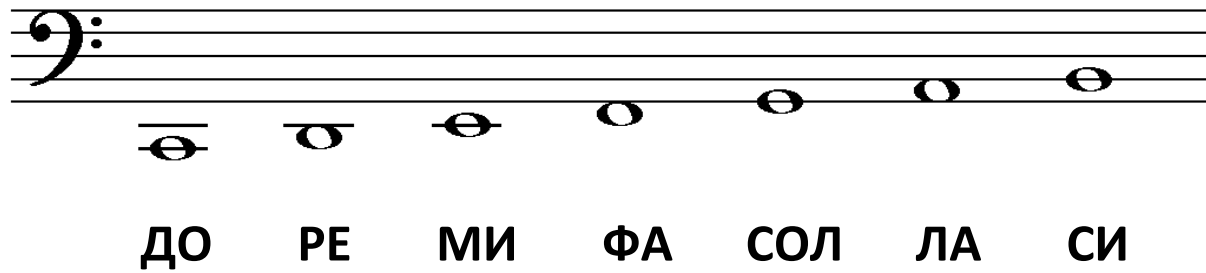


Контра октава



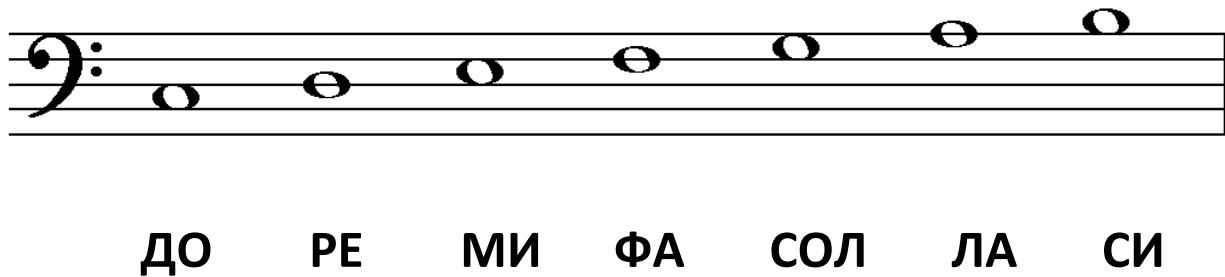
A musical staff in bass clef with a double bar line at the end. Three notes are shown below the staff: Sol (C2), La (C3), and Si (C4). Each note is a half note with a horizontal line above it. Below each note is its corresponding letter name in Cyrillic: СОЛ, ЛА, СИ.

Голяма октава



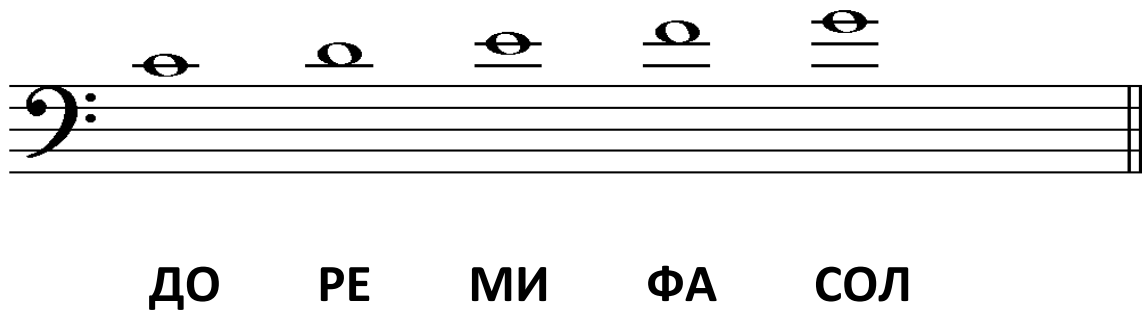
A musical staff in bass clef with a double bar line at the end. Seven notes are shown below the staff: Do (C4), Re (D4), Mi (E4), Fa (F4), Sol (G4), La (A4), and Si (B4). Each note is a half note with a horizontal line above it. Below each note is its corresponding letter name in Cyrillic: ДО, РЕ, МИ, ФА, СОЛ, ЛА, СИ.

Малка октава



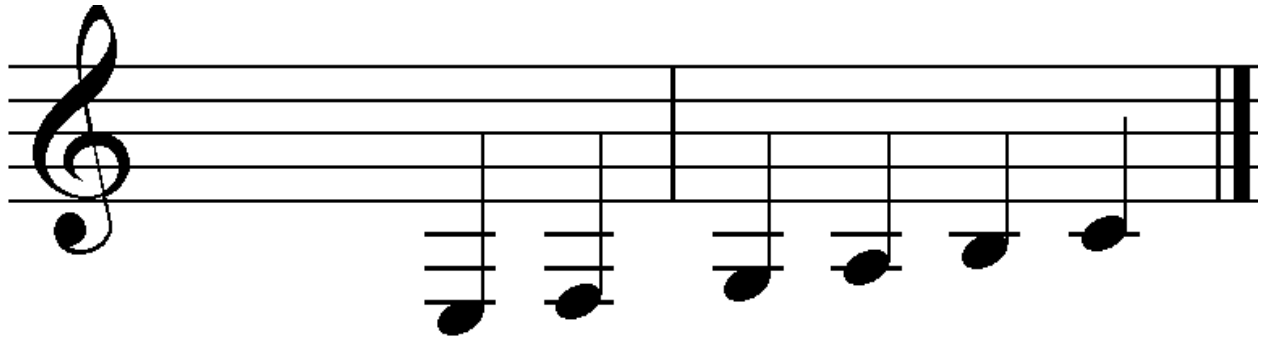
A musical staff in bass clef with a double bar line at the end. Seven notes are shown below the staff: Do (C4), Re (D4), Mi (E4), Fa (F4), Sol (G4), La (A4), and Si (B4). Each note is a half note with a horizontal line above it. Below each note is its corresponding letter name in Cyrillic: ДО, РЕ, МИ, ФА, СОЛ, ЛА, СИ.

Първа октава



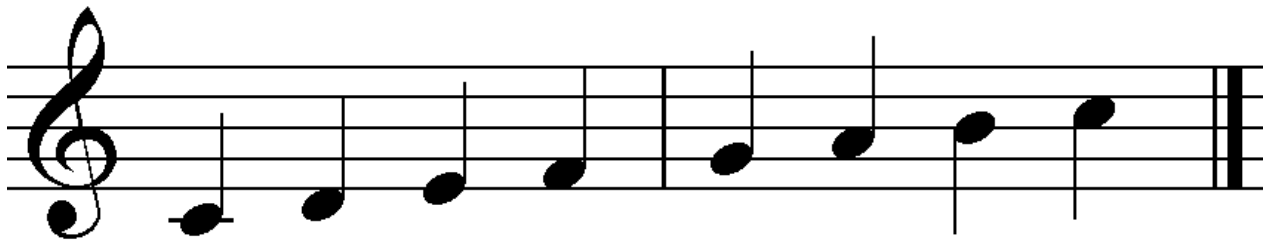
A musical staff in bass clef with a double bar line at the end. Five notes are shown below the staff: Do (C4), Re (D4), Mi (E4), Fa (F4), and Sol (G4). Each note is a half note with a horizontal line above it. Below each note is its corresponding letter name in Cyrillic: ДО, РЕ, МИ, ФА, СОЛ.

Малка октава



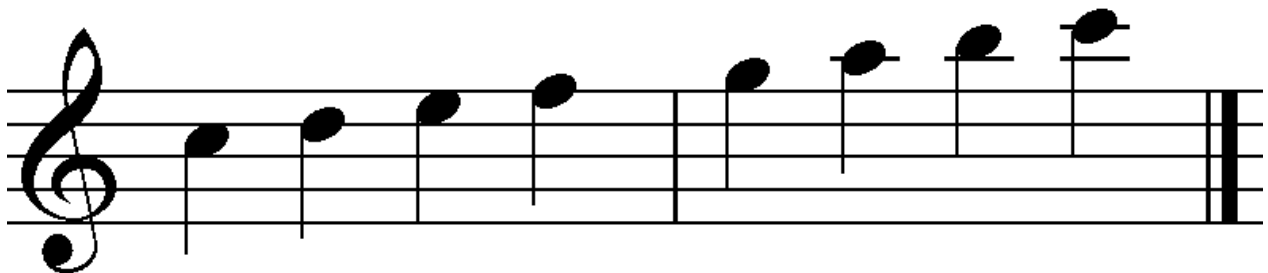
МИ ФА СОЛ ЛА СИ ДО

Първа октава



ДО РЕ МИ ФА СОЛ ЛА СИ ДО

Втора октава



ДО РЕ МИ ФА СОЛ ЛА СИ ДО